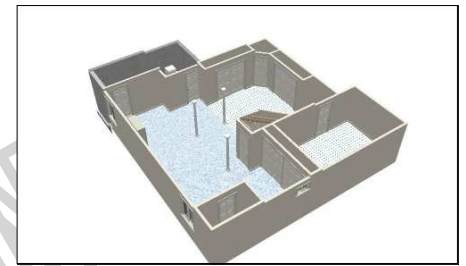
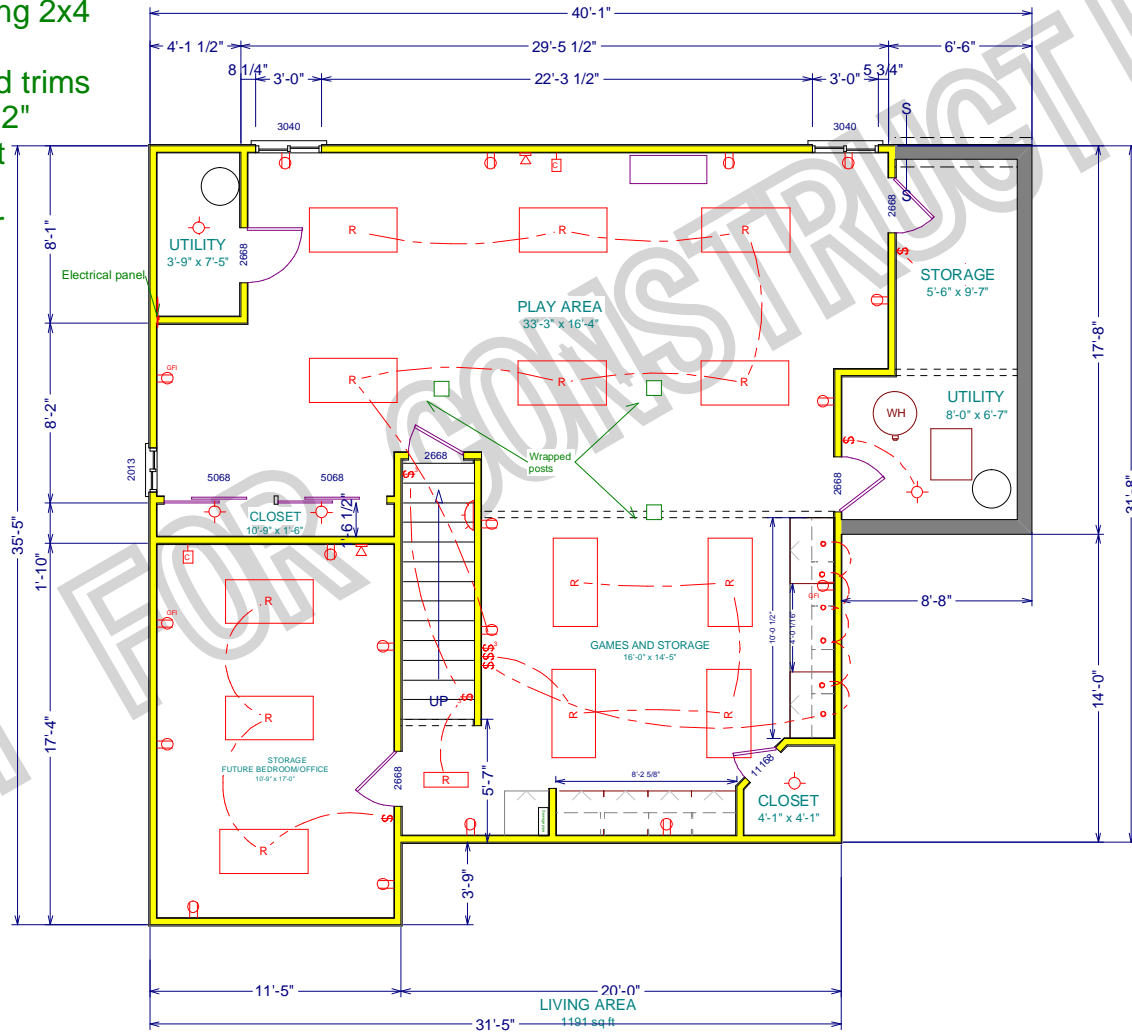


Construction materials:

- * 2x4 construction studs 16" O.C.
- * R-13 insulation
- * EMT electrical conduit
- * 1/2" drywall
- * Suspended ceiling 2x2
- * Recessed lighting 2x4
- * 6-panel doors
- * basic baseboard trims
- * Vinyl tiles 12"x12"
- * Standard carpet
- * All outlet 2 to 3 feet above floor



Stevo's Custom Carpentry
 756 Warwick Court Carol Stream, IL 60188
 630-776-5920 www.stevohammersmith.com

John Doe's residence
 1000 Miracle Dr
 No Where, NA 8000-0000

Basement Remodeling

SCALE: 1/4" = 1'
 WHERE APPLIES
 10/26/2006
 DRAWN BY: STEVO

SHEET NUMBER
 OF PAGE
A-1 **1**